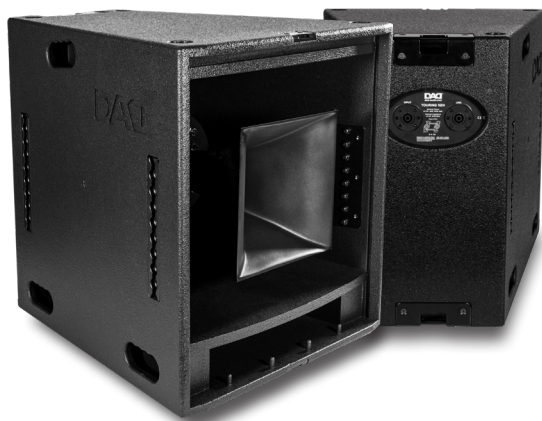


# TOURING112H



## TOURING112H

High-efficiency passive loudspeakers, horn loaded configuration, bi-amplifiable, 2 way 500W AES, 138dB SPL

- Low frequency: 12" neodymium woofer/3"v.c.
- High frequency: 1.4" neodymium driver/3"v.c.
- Frequency response: 80-18000 Hz (±3dB)
- Excellent clarity in the reproduction of voice and music for live and recorded performances
- For sound installations in indoor/outdoor environments requiring dynamics and high sound pressure over long distances
- Birch plywood enclosure

## TOURING112HP

High-efficiency passive loudspeaker, horn-loaded configuration, 2-way 500W AES, 138dB SPL

- Low frequency: 12" neodymium woofer/3"v.c.
- High frequency: 1.4" neodymium driver/3"v.c.
- Frequency response: 80-18000 Hz (±3dB)
- Excellent clarity in the reproduction of voice and music for live and recorded performances
- For sound installations in indoor/outdoor environments requiring dynamics and high sound pressure over long distances
- Birch plywood enclosure



12" Nd



1,4" Nd



75°x40°



RIGGING



DEDICATED PRESET

### TOURING112H TECHNICAL DATA

#### LOUDSPEAKERS

- System type: coaxial horn load bi-amp
- Low frequency: 12" neodymium woofer / 3" v.c.
- High frequency: 1.4" neodymium driver / 3" v.c.

#### COMPONENTS

- AES/program power: 510/1020W
- SPL max: 138dB @1m (free field)

#### ACOUSTICAL SPECIFICATIONS

- Sensitivity: 105dB
- Impedance: 8/16 Ohm
- SPL cont/peak: 132/138dB @1m (free field)
- Frequency response: 80-18000Hz (±3dB)
- Coverage angle HxV: 75x40°
- Protection: H.F. signal compression
- Suggest HPF range: Active: LF 100/150Hz - HF 1000Hz
- Recommended amplifier up to: LF/HF:1000/250W 8/16Ohm

#### INPUT/OUTPUT CONNECTORS

- Input signal: Neutrik NL4 IN/OUT

#### CABINET CONSTRUCTION

- Cabinet material: 18mm birchplywood
- Sospension system: eyebolt, fly track, 35 mm pole mount
- Angle: 26° trapezoidal taper
- Handles: 6 on side

#### PHYSICAL

- Dimensions (WxHxD): 560x590x600mm
- Weight: 35kg

### TOURING112HP TECHNICAL DATA

#### LOUDSPEAKERS

- System type: coaxial horn loaded
- Low frequency: 12" neodymium woofer / 3" v.c.
- High frequency: 1.4" neodymium driver / 3" v.c.

#### COMPONENTS

- AES/program power: 510/1020W
- SPL max: 138dB @1m (free field)

#### ACOUSTICAL SPECIFICATIONS

- Sensitivity: 105dB
- Impedance: 8 Ohm
- SPL cont/peak: 132/138dB @1m (free field)
- Frequency response: 80-18000Hz (±3dB)
- Coverage angle HxV: 75x40°
- Cross over frequency: 1000Hz
- Protection: H.F. signal compression
- Suggest HPF range: 100/150Hz
- Recommended amplifier up to: 1000W /8Ohm

#### INPUT/OUTPUT CONNECTORS

- Input signal: Neutrik NL4 IN/OUT

#### CABINET CONSTRUCTION

- Cabinet material: 18mm birchplywood
- Sospension system: eyebolt, fly track, 35 mm pole mount
- Angle: 26° trapezoidal taper
- Handles: 6 on side

#### PHYSICAL

- Dimensions (WxHxD): 560x590x600mm
- Weight: 35kg



## TOURING218H

- High-efficiency passive subwoofer, horn-bandpass configuration, 3400W AES, 143dB SPL
- 
- Low frequency: 2X18" woofer/4.5"v.c.
- AES/program power: 3400/6800W
- Frequency response: 40-250 Hz ( $\pm 3$ dB)
- High-efficiency subwoofer delivering extended frequency response, combining advantages of horns (efficiency and directivity control) to those of band-pass systems (extension of frequency response to the low spectrum of frequencies)
- Sound reinforcement of live events in large indoor/outdoor venues, where definition and high-pressure levels on low frequencies are required
- Birch plywood enclosure

# TOURING218H



2x18" Nd



QUASI OMNI



DEDICATED PRESET

## TOURING218H TECHNICAL DATA

### LOUDSPEAKERS

- System type: bandpass - horn

### COMPONENTS

- Low frequency: 2X18" woofer/4.5"v.c.

### FEATURES

- AES/program power: 3400/6800W
  - SPL max: 143dB @1m (free field)
- ### ACOUSTICAL SPECIFICATIONS
- Sensitivity: 104dB @1W/1m (free field)
  - Impedance: 4 Ohm
  - SPL cont/peak: 137/143dB @1m (free field)
  - Frequency response: 40-250Hz ( $\pm 3$ dB)

- Coverage angle HxV: omnidirectional
- Suggest LPF range: 80-150Hz
- Recommended amplifier up to: 6800W /4Ohm

### INPUT/OUTPUT CONNECTORS

- Input signal: Neutrik NL4 IN/OUT

### CABINET CONSTRUCTION

- Cabinet material: 18mm birchplywood
- Handles: 10 on side

### PHYSICAL

- Dimensions (WxHxD): 1165x570x860mm
- Weight: 93kg