



## ROADSTAGE

ROADSTAGE is a system designed for the assembly of modular stages. The system is composed of a practical aluminium frame assembled on a plywood deck panel; the coupling parts and the different legs available allow the setup of self-levelling stages, rigid and safe with many extensions possibilities.

ROADSTAGE system is designed as a professional and versatile solution to setup stages, platforms, catwalks and raised floors. Its features such as max load and wide range of accessories make .



CERTIFIED BY



Roadstage an excellent solution for installations and temporary events on flat or irregular floors, both in indoor and outdoor.

The technology developed for ROADSTAGE structures allow for a quick and flexible installation, with the possibility of mounting just two legs for each board. Also featuring high stability combined with generous load capacity (750kg/mq max). Elements can be stacked due to the limited weight and volume of each part, making transportation and storage simpler.

## RSP

**Deck panel in carply for modular stage system ROADSTAGE series, fire-proof and anti-skid, suitable for indoor and outdoor applications**

- Made of carply 12mm
- Resistant to weathering agents
- Panel frame made of aluminium
- Load capacity 500 kg/sqm (TUV standard)-750 kg/sqm (CEE standard)

Code	Panel	Dimension (mm)	Weight (kg)
<b>RSP1010</b>	1x1m	1000x90x1000	19
<b>RSP2005</b>	2x0.5m	2000x90x500	20
<b>RSP2010</b>	2x1m	2000x90x1000	37

## RSX

Deck panel in plexiglass

Code	Panel	Dimension (mm)
<b>RSX1010</b>	1x1m	1000x90x1000
<b>RSX2005</b>	2x0.5m	2000x90x500
<b>RSX2010</b>	2x1m	2000x90x1000



### RSSL

#### Aluminium leg for ROADSTAGE systems

- Different available heights: 20 cm min / 100 cm max
- Feet covered by anti-skid rubber

Code	Height (cm)
<b>RSSL020</b>	20
<b>RSSL040</b>	40
<b>RSSL060</b>	60
<b>RSSL080</b>	80
<b>RSSL100</b>	100



### RSTL

#### Telescopic leg for ROADSTAGE systems, adjustable height, made in aluminium

- Different available heights: 40 cm min / 220 cm max
- Feet covered by anti-skid rubber

Code	Height (cm)
<b>RSTL0406</b>	40/60
<b>RSTL0610</b>	60/100
<b>RSTL0814</b>	80/140
<b>RSTL1018</b>	100/180
<b>RSTL1222</b>	120/220



### RSSW040

#### Aluminium leg for ROADSTAGE systems

- Height 40 cm
- 100 mm diameter swivel castor with brake



#### Self-levelling stairs for ROADSTAGE systems, made in zinc-coated steel

Available heights: 40/60 - 60/100 - 80/140 - 100/180 cm

Code	Height (cm)	Steps (n)
<b>RSSA2H0406</b>	40/60	2
<b>RSSA4H0610</b>	60/100	4
<b>RSSA5H0814</b>	80/140	5
<b>RSSA7H1018</b>	100/180	7



#### Set step for stairs ROADSTAGE systems

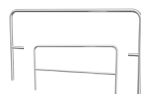
- Available heights: 20/40 - 60 - 80 cm
- Assembly insert RSA104 included in the RSSF12H04 scale module

Code	Height (cm)	Steps (n)
<b>RSSF12H04</b>	20/40	2
<b>RSSF03H06</b>	60	1
<b>RSSF04H08</b>	80	1



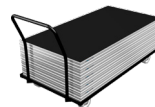
### RSSH

Galvanised steel handrail for ROADSTAGE stairs systems



### RSH100 RSSH

Galvanised steel handrail for ROADSTAGE modular systems



### RSPT2010

Stage trolley for ROADSTAGE system



### RSHT2000

Handrail trolley for ROADSTAGE system



### RSA101

Stage deck clamp for ROADSTAGE system



### RSA102

Handrail assembly clamp for ROADSTAGE system, compatible with RSH



### RSA103

Self leveling insert for ROADSTAGE system



### RSA104

Assembly inserts for ROADSTAGE system, necessary for the stair module mounting



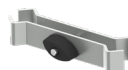
### RSA105

Stage leg clamp for ROADSTAGE system



### RSA109

Double stage leg clamp for ROADSTAGE system



### RSA118

Handrail clamp for ROADSTAGE system



### RSA124

Stage deck side clamp for ROADSTAGE and LITESTAGE systems