

MENAC3FXW



Cable mount TRUE Neutrik powerCON power socket.

- True mains connector with breaking capacity (CBC)
- 16A "POWER IN" (1P+N+G)
- Easy and reliable twist lock system
- ENEC certified according to IEC 60320

MENAC3MXW



Cable mount TRUE Neutrik powerCON power plug.

- True mains connector with breaking capacity (CBC)
- 16A "POWER IN" (1P+N+G)
- Easy and reliable twist lock system
- ENEC certified according to IEC 60320

MENAC3FPX



Panel mount TRUE Neutrik powerCON power socket.

- True mains connector with breaking capacity (CBC)
- 16A "POWER IN" (1P+N+G)
- Easy and reliable twist lock system
- ENEC certified according to IEC 60320

MENAC3MPX



Panel mount TRUE Neutrik powerCON power plug.

- True mains connector with breaking capacity (CBC)
- 16A "POWER IN" (1P+N+G)
- Easy and reliable twist lock system
- ENEC certified according to IEC 60320

MENAC3FCA



Cable mount Neutrik powerCON power socket

- 20A "POWER IN" (1P+N+G) with safety system.

MENAC3FCB



Cable mount Neutrik powerCON power plug

- 20A "POWER OUT" (1P+N+G) with safety system.

MENAC3MPA



Neutrik powerCON panel mount power plug

- 20A "POWER IN" (1P+N+G) with safety system.

MENAC3MPB



Neutrik powerCON panel mount power plug

- 20A "POWER OUT" (1P+N+G) with safety system.

MESV10



Cable mount IEC plug

- 10A-3p (1P+N+E)

MESP10



Panel mount VDE plug

- 10A-3p (1P+N+E)

MEPP10



Panel mount VDE socket

- 10A-3p (1P+N+E)

MEPV10



Cable mount IEC socket

- 10A-3p (1P+N+E)

VDE25UK VDE3075UK



Power cable VDE socket

- UK plug
- 3 X 0,75mm²

VDE15SEU



Power cable VDE socket

- Shuko plug



9282PWL1FV

400A power lock cable mount socket, single pole, SOURCE, brown



9282PWL2FV

400A power lock cable mount socket, single pole, SOURCE, black



9282PWL3FV

400A powerlock cable-mount socket, single pole, SOURCE, grey



9282PWNTFV

400A power lock cable mount socket, single pole, SOURCE, blue



9282PWGDFV

400A power lock cable mount socket, single pole, SOURCE, green



9282PWL1FP

400A power lock panel mount socket, single pole, SOURCE, brown



9282PWL2FP

400A power lock panel mount socket, single pole, SOURCE, black



9282PWL3FP

400A powerlock panel-mount socket, single pole, SOURCE, grey



9282PWNTFP

400A power lock panel mount socket, single pole, SOURCE, blue



9282PWGDFP

400A power lock panel mount socket, single pole, SOURCE, green



9282PWL1MV

400A power lock cable mount plug, single pole, DRAIN, brown



9282PWL2MV

400A power lock cable mount plug, single pole, DRAIN, black



9282PWL3MV

400A powerlock cable-mount plug, single pole, DRAIN, grey



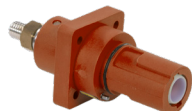
9282PWNTMV

400A power lock cable mount plug, single pole, DRAIN, blue



9282PWGDMV

400A power lock cable mount plug, single pole, DRAIN, green



9282PWL1MP

400A power lock panel mount plug, single pole, DRAIN, brown



9282PWL2MP

400A power lock panel mount plug, single pole, DRAIN, black



9282PWL3MP

400A powerlock panel-mount plug, single pole, DRAIN, grey



9282PWNTMP

400A power lock panel mount plug, single pole, DRAIN, blue



9282PWGDMP

400A power lock panel mount socket, single pole, DRAIN, green

Technical Data	
Max current rating	400A
Max rated voltage to ground	2Kv AC / 3Kv DC
Min flashover	9.5Kv AC/DC (peak)
Insulating resolution	> 5MOhm @ 500 VDC
Working temp.	-30°C / +125°C
Set screw	120 mm ²
Fire reaction	Flame-retardant up to IP67 (correct coupling)
IP rating	
Electric shock protection	IP2X